

ARROW MAG

THE MAGAZINE
OF HVAC
SOLUTIONS

NUMBER #01

A HISTORY OF QUALITY PRODUCTS
INNOVATION AND SERVICES

A HISTORY OF
QUALITY
PRODUCTS,
INNOVATION
AND
SERVICES

ARROW MAG



INDEX

SIMPLIFY YOUR WORK	PAG. 4
A UNION OF EXCELLENCE	PAG. 5
ARTIPLASTIC	PAG. 6
CASTEL ENGINEERING	PAG. 10
DIVERSITECH UNITED KINGDOM	PAG. 14
NICCONS	PAG. 18
RODIGAS	PAG. 22
GIA	PAG. 26
STAY IN TOUCH	PAG. 30

SIMPLIFY YOUR WORK

JANUARY 2024

**A UNION OF EXCELLENCE:
DIVERSITECH CORPORATION
AND EUROPEAN COMPANIES
REVOLUTIONISE THE HVAC INDUSTRY**



A HISTORY OF QUALITY PRODUCTS, INNOVATION AND SERVICES

We wish to announce an exciting collaboration that promises to redefine standards in the Heating, Ventilation, and Air Conditioning (HVAC) accessories and ancillaries industry. The US-based company, DiversiTech Corporation, has recently formed a strategic partnership with some of the most prestigious European manufacturers in the trade: Rodigas, ArtiPlastic, Castel Engineering, Niccons, Gia and Vorpa. This union, aimed at creating important synergies, has the potential to transform the way the market usually faces challenges and will subsequently offer the best services to customers.

The diversity of skills and wealth of experience that these companies bring is an invaluable asset. DiversiTech Corporation, with its long history of innovation and leadership in the American industry, joins forces with high-calibre European enterprises to create a common and united front capable of anticipating and exceeding the needs and evolution of the market.

This group of companies all make unique and individual contributions, and when amalgamated, offer a complete range of solutions dedicated to the HVAC sector. Rodigas, with its experience in the metalworking industry, perfectly complements ArtiPlastic's expertise in plastics extrusion. Castel Engineering specialises in the production of high-quality plastic components, and this adds a dimension of versatility and design to the market. Niccons, Gia and Vorpa, already European leaders in the production of state-of-the-art HVAC systems, bring advanced skills and cutting-edge technology.

AN IMPECCABLE SERVICE FOR OUR CUSTOMERS

What makes this union truly remarkable is the emphasis placed on offering impeccable service to distribution customers; the goal is to create a supply chain that is not only operationally efficient—but also puts the customer experience at the centre. The collaboration aims to simplify processes, reduce delivery times and increase flexibility in product customisation options. In a world where speed and adaptability are crucial, this union aims to be a beacon of excellence in the HVAC industry.

The synergies between these companies, combined with DiversiTech Corporation's extensive distribution network, promises to open new horizons for the global HVAC market. The sharing of resources, knowledge and technologies will enable the group to address common challenges more effectively, thus offering more advanced solutions.

In conclusion, the union between DiversiTech Corporation and European partners Rodigas, ArtiPlastic, Castel Engineering, Niccons, Gia and Vorpa is a bold and innovative step that demonstrates how transcontinental collaboration can lead to impressive results. We are excited to follow the future developments of this partnership and see how it changes the landscape of the HVAC industry offering superior services to customers worldwide.

DIVERSITECH EUROPE
INDUSTRIAL UNIT
AND LOGISTIC CENTRE





SMART PLASTIC SOLUTIONS

**INGENUITY AND INITIATIVE:
AS A RESULT OF WHICH
WE HAVE CHANGED
THE MARKET FOREVER**

Artiplastic (established in 1973) stands as a pioneering force in the field of plastic material transformation and processing. With a steadfast commitment to excellence, the company has been a reliable partner for third parties, primarily catering to the industrial sector.

Over the span of nearly five decades, Artiplastic has honed its expertise, evolving into a dynamic entity specialising in the transformation and processing of plastic material. Artiplastic takes pride in the manufacturing and marketing of extruded and co-extruded profiles tailored to a diverse array of commodity sectors.

Since its inception, Artiplastic has been synonymous with innovation and adaptability. The company has continually invested in cutting-edge technology, boasting a comprehensive fleet of up-to-date single and dual-screw extrusion lines. This technological prowess is complemented by the utilisation of its proprietary extrusion lines namely Canalsplit and Canalsplit-Midi which further enhance its capacity to meet the evolving demands of the market.

Artiplastic's commitment to staying at the forefront of technological advancements enables it to offer customers a wide range of customisation options, ensuring that its products align seamlessly with the specific requirements of different industries.

Strategically based near Milan, Artiplastic benefits from a location that serves as a strategic point for the distribution of its products across Italy and Europe. Spanning an impressive indoor warehouse of 4,500 M², the company has meticulously organised its operations to guarantee customers top-notch quality, efficiency, professionalism, and a distinct competitive edge in the market.

As Artiplastic looks ahead, its unwavering dedication to innovation, quality, and customer satisfaction positions it as market-leader in the ever-evolving landscape of plastic materials transformation and processing.

 **ARTIPLASTIC®**
SMART PLASTIC SOLUTIONS

KNOW HOW MADE IN MILAN

SINCE 1973



ARTIPLASTIC
TRUNKING SPECIALIST
WWW.ARTIPLASTIC.IT



INGENUITY AND INITIATIVE

As a result of this we have changed the market forever. In 1996, we invented the Canalsplit, dedicated to the air conditioning plant sector. An idea as unique as it is valuable, intended to become the most used product in the world for this application.

Canalsplit was a brilliant instinct generated by the need to simplify installation, coupled with our ability to listen to our customers, has transformed this product into an intelligent solution. An ambitious and challenging project, Canalsplit's invention has been positively received and welcomed by the market.

Artiplastic successfully exports all over the world, and we are proud to say that our company has retained the craftsmanship and familiarity that typically distinguishes Italian companies.

Located near to Milan, a strategic base for the distribution of its products in Italy and Europe, Artiplastic boasts a 4,500 M² warehouse organised to ensure their customers receive the very best quality, efficiency, professionalism and competitive edge technology available in the market.



DYNAMIC AND FLEXIBLE

A smooth and corrugated drain hose is used to remove condensate water. It is easily connected to internal or external air conditioning units. It's made from soft PVC and corrugated rigid PVC. It can be fixed to the wall with pipe holder clips or ducts (Canalsplit 03 and 04).



Corrugated hoses provide optimal resistant to weight pressure, and offer connection at a 75cm range. Accessories Y joint, linear joint, T joint and siphon could be connected directly to the pipes to solve any installation anomaly.

CORRUGATED HOSE IS USED TO EVACUATE CONDENSATE WATER

CANALSPLIT 08 IS A DUCT FOR AIR-COOLING BUILT IN SELF-EXTINGUISHING PVC

24 HOURS
7 DAYS

MANUFACTURING ON A NON-STOP CYCLE

SERVING THE CUSTOMER

Artiplastic production relies on a diverse range of state-of-the-art single and dual-screw extrusion lines, in order to offer its customers the very best in terms of efficiency and quality to price ratio.

Artiplastic also offers its customers a support and consulting service, with the design and manufacture of bespoke profiles.

A SYSTEM THAT SPELLS QUALITY

The Canalsplit conduits and accessories are manufactured in rigid PVC type V0 - also self-extinguishing and resistant to UV rays - to ensure the outstanding endurance over time and in any installation conditions.

The PVC used is first-rate and is manufactured exclusively in Italy - in accordance with the RoHS 2 and REACH standards.





Castel Engineering is a Belgian company specialising in the extrusion and injection moulding of plastic parts specifically for the HVAC-R industries.

FOUNDED IN 1986

FOUNDED IN 1986 AS A SMALL COMPANY, CASTEL ENGINEERING HAS BEEN GROWING RAPIDLY TO BECOME A EUROPEAN MARKET LEADER AND A SYMBOL OF QUALITY.

Founded in 1986, Castel Engineering offers years of experience in the manufacturing of plastic parts and profiles for the refrigeration industry, with an emphasis on accessories for cold rooms, freezers, clean rooms, as well as for the installation of split air conditioning units.

Our headquarters are located in the heart of Europe - Belgium (Mouscron) which is the perfect place for the distribution of our products worldwide.

MOUSCRON BELGIUM

We have an in-house R&D team constantly looking for innovative solutions. Castel Engineering has a long history of OEM manufacturing and we guide our customers from the initial design of the product through to the final production run.

Castel has full control of all production processes and tool conceptions, and have been able to keep all commitments while remaining the most competitive supplier.



OUR VALUES

As a manufacturer, Castel Engineering is aware that modern economy requires constant and swift adaptation, and the ability to offer product diversification. This will ensure a growing market share.

THE ACCESSORIES FOR AN EASY AND COMPLETE PROFESSIONAL INSTALLATION

We believe in our duty to support our customers with their requests. We are keen on sharing expertise in order to allow them to opt for the best suitable solution for their projects.

Communication is crucial. We take care of every customer with an individual and personal approach. Our multilingual sales team will follow up your requests step by step, to understand your needs, advise selection of the right products, send a prompt quotation and ensure that your order is delivered to your warehouse.

A PERSONAL APPROACH: OUR VALUES

We have reached an evergrowing consumption of 5 tonnes raw material each year into the machinery depot that Castel Engineering currently houses at its headquarters. We believe this serves to extend our offer and services to our customers.

Our Research and Development Department, equipped with rapid 3D prototyping equipment, has the knowledge to ensure that our products keep up with the evolution of technology. Additionally, another key role is to keep on improving and developing existing products while conceiving new ones, all this with a reduced ecological footprint and compliance with new standards.



FLEXY KIT

PROTECTS YOUR LINESETS RUNNING FROM THE CONDENSER UNIT TO THE WALL

SAVES TIME WHEN CONNECTING 2 DUCTS IN UNIQUE ARCHITECTURAL CONFIGURATIONS

THE OPTIMAL WAY TO PROTECT YOUR INSTALLATION

Easy and fast installation protects the linesets and the unit, saves energy, extends the unit's life cycle and provides aesthetic UV-resistant design that can be painted to match environment.

Introducing Castel Airco's OptimalDuct, the optimal solution for HVAC systems, designed and crafted by Castel Engineering.

This innovative product brings a host of features and benefits to streamline your installation process and enhance overall efficiency.

The fast and hassle-free installation with a simple click-on mechanism for fittings onto the duct guarantees a more efficient workflow, saying goodbye to time-consuming setups.

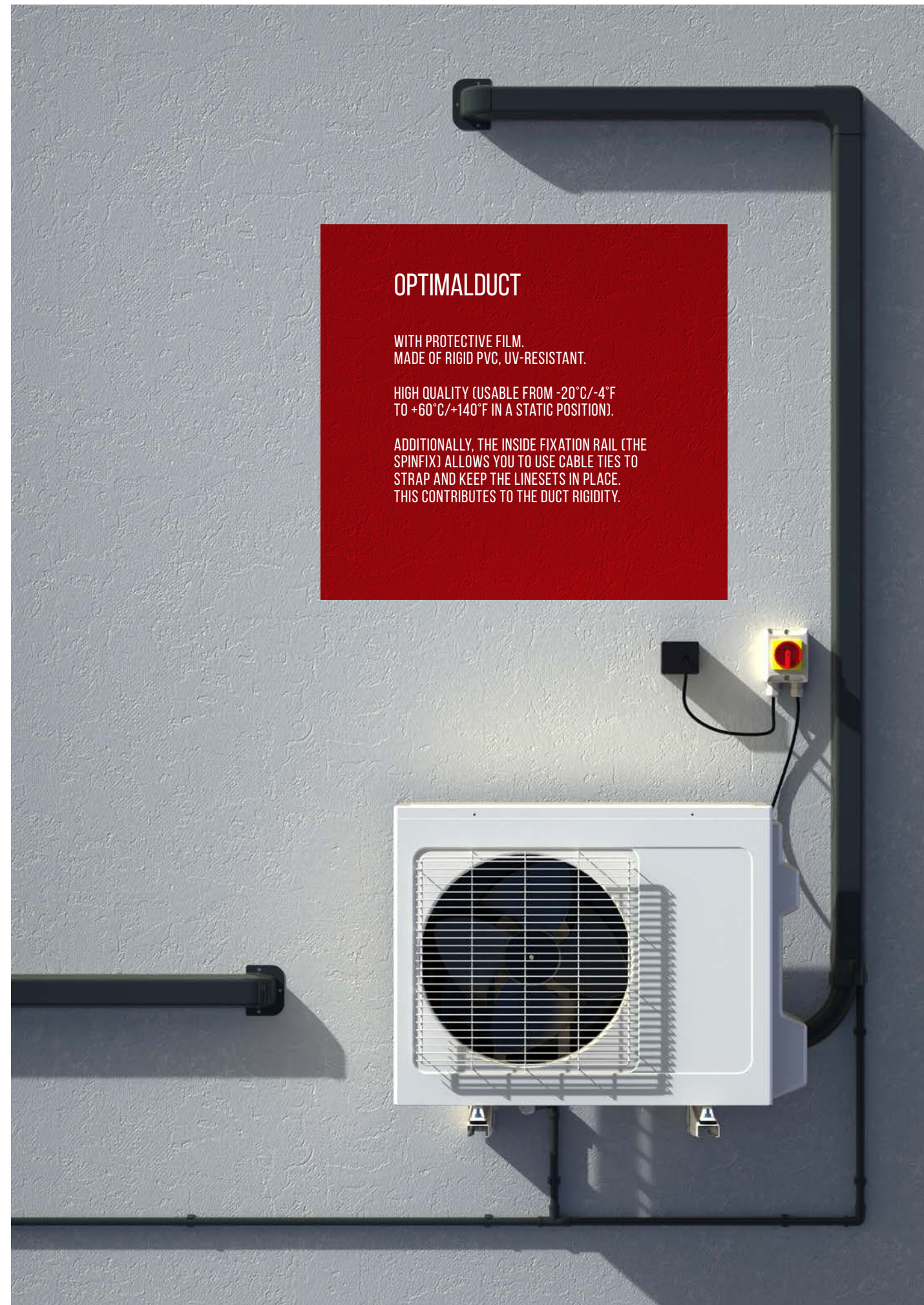
The OptimalDuct comes equipped with the SpinFix-Clip, a technology that turns what used to be a two-person job into a manageable task for a single installer.

This ingenious clip keeps duct contents securely strapped during installation, ensuring a smoother process.

The SpinFix also contributes to duct rigidity: thanks to the inside fixation rail, cable ties can be used to strap and secure linesets in place, adding an extra layer of stability.

By featuring a protective film that can be easily removed from the ducts, OptimalDuct maintains cleanliness and a professional appearance.

Different duct sizes are available to cater to your specific installation requirements.



RAPID-O PLUG & PLAY FITTINGS

The fastest and easiest way to connect copper refrigeration pipes.



Rapid-O, a trailblazer in product innovation, presents a comprehensive selection of top-notch fittings designed for swift and seamless connections of copper refrigeration pipes.

Distinguishing themselves as the quickest and most straightforward solution in the market, our fittings not only boast efficiency but also exemplify reusability and durability.

Discover a revolutionary approach to your projects with our distinctive fittings, enabling you to complete tasks up to 90% faster than conventional methods.

Rapid-O takes the lead in redefining the landscape of copper pipe connections, outpacing traditional approaches with unparalleled speed and simplicity. Experience the future of efficient and effective pipe connections with Rapid-O.

To delve deeper into our innovative solutions, visit www.rapid-o.be.

SIMPLIFY YOUR SUPPLY

#THEDIVERSITECHWAY

DiversiTech International (Pump House) is a leading manufacturer and supplier of components and related products for the heating, ventilating, air conditioning, and refrigeration (HVAC/R/ASHP) industry.

DiversiTech International (formerly Pump House) was founded in 2000, initially with 4 members of staff and in a small warehouse.

Over the last 22 years we have grown to over 50 members of staff, and now boast approximately 60,000 square feet of warehousing, located centrally in the UK city of Nottingham.

In 2016 we became part of the DiversiTech group, North America's largest manufacturer of equipment pads and a leading manufacturer and supplier of components

and related products to the HVACR markets.

On October 1, 2021, our name changed to DiversiTech International, with the Pump House pumps brand remaining under the DiversiTech International corporate umbrella, as a stand-alone asset.

For our wholesale customers, we offer the benefit of a single supplier source for over 200 product categories, giving them unparalleled product availability and cost advantages across every market we serve.

CONDENSATE PUMPS AND ACCESSORIES

DiversiTech International stocks a range of condensate removal tank pumps. The RedBox 1 Litre and 2 litre are versatile and popular condensate tank pumps with a flow rate of 280 LPH and a lift of 5.1 metres.

These pumps have metal mounting tabs which allows the tank to be screwed to the wall. The universal power lead makes the pumps easy to install, service and retrofit.



REDBOX LED

The unique LED indicators highlight when the pumps have power, are running and when the high level alarm has been activated.



PUMP
HOUSE

DIVERSITECH®
UNITED KINGDOM

HILMOR TOOLS

At Hilmor, there is a simple design philosophy: create tools that are a step ahead. The kind that are equipped with features that save our customers time, frustration and maybe even a few headaches.

Each tool is designed with all of the features you need and none of the ones you don't. They are made to work in the toughest environments. The kind you encounter, day in and day out.

To uncover the heritage of Hilmor, you have to go back to our start in 1926 in Sheffield, England. We began with just one product: a tube bender.



INSTALL+

EASY-FIT

TOOLS+

SERVICE+
MAINTENANCE



It sounds simple, but at the time, Hilmor cold-form benders were the first of their kind for plumbers, electricians and HVAC/R technicians. And, it was that one tube bender that allowed us to create a foundation for the brand we are today.

Over the years, Hilmor (a strong American-based brand) has only grown stronger. In turn, we've become a determined more than ever to bring ingenuity to the tools you've come to rely on every day.

We've listened. We've learned. More advancements. More streamlined designs. More ways to help you get the job done right.

HILMOR RANGE

- Hoses
- Tube benders
- Flaring and swaging
- Tube cutters
- Screwdrivers
- Multi-tools
- Hex keys
- Wrenches
- Pliers
- Strippers
- Deburring
- Utility knife
- Tool bags

hilmor®

REVOLUTIONARY FLARING & SWAGING

These flaring and swaging tools are designed for most tubing diameters, and they allow you to connect tubes without the need for extra fittings (swage), and preserves the copper malleability (flare) thus preventing cracks and leaks.

PORTABLE COIL CLEANING SYSTEM: NO WATER, NO POWER, NO PROBLEM

CoilJet is a portable HVAC coil cleaning system ideal for cleaning evaporator coils and condenser coil in locations where water and power may be inaccessible, such as rooftops.

CJ-125 is designed for portability by including separate water and chemical tanks and a long life rechargeable battery.

Expertly clean condenser and evaporator coils no matter where the location may be.

Key features:

- Cleans condenser and evaporator coils
- Applies coil cleaner and flushes with fresh water
- Carries all the water and coil cleaner you need to clean up to five units using 125 psi pressure.



ARE YOU GETTING 100% OF HEAT INTO YOUR PROPERTY?

We have developed a range of Monobloc heat pump accessories to help optimise efficiency and simplify the installation, and we boast over 15 years experience in the heat pump market. We provide equipment and tools essential for the installation of air

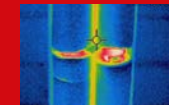
source heat pumps. This includes Flexi foot kits, flexible hoses, Flexi Lite slab kit, insulation, trunking, isolators, with solutions for installation, connecting, insulating, protecting and maintaining your air source heat pump installations.

**PUMP
HOUSE**

DIVERSITECH
UNITED KINGDOM

PREPARE FOR THE HEAT PUMP FUTURE

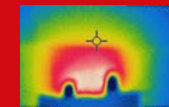
NO INSULATION CAN RESULT IN A HEAT LOSS OF UP TO 158W/M



Insulate pipework



Insulate connections



Insulate through the wall



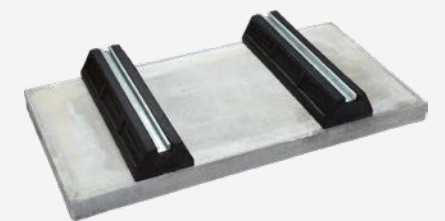
FLEXIBLE HOSE

- Stainless steel braided hose
- Pre-insulated with 19 mm PVC coating
- 1" and 1-1/4" male or female BSP thread fitting available
- 28 mm compression fitting suitable for most ASHP installations
- Additional 80 mm of insulation to cover the connectors



INSULATION KIT

- Installation through the wall
- Stop cold bridging for pipe work running through the wall



FLEXI LITE SLAB & FOOT KIT

- Low cost innovative solution for floor mounting air source heat pumps

NICCONS HVAC MANUFACTURER SINCE 1988

As a result of the many years of experience and significant know-how in the fields of air conditioning, refrigeration, plant engineering and thermo-hydraulics, Niccons Italy was founded in Vicenza in 1998.

Knowledge, dedication, passion and brilliant intuition have allowed the company to develop innovative solutions subject to numerous patents, with a technical progress that has made the company a leader in a competitive and constantly evolving market.

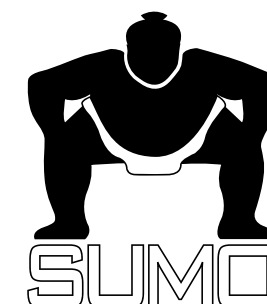
With an enthusiastic and proactive look to the future, Niccons is a guarantee of reliability, quality, efficiency and flexibility, to ensure its customers get an answer to their needs and installation challenges.

niccons[®]
HVAC MANUFACTURING



Niccons Italy adheres to Corporate Social Responsibility and thus adopts numerous corporate values, including transparency in operations, fairness, trust in the staff, complete customer satisfaction and respect for the environment (which Niccons has focused on with great interest and responsibility).

Niccons is aware of the vast problems that represent threats to our ecosystem, and are committed to contributing to the fight against climate change by designing a special line of eco-friendly products, the SUMO anti-vibration ground support. This product, already a best seller, is made from waste material (i.e. car tyres), which recycles the rubber and gives it a second life.



COLLABORATION BASED ON RESPECT AND RELIABILITY

In a corporation, company ideals are extremely important as they have the potential to strengthen the level of integration between all individuals (within this company), and establish a relationship of trust with the external environment. Being environmentally responsible is a duty to guarantee a better life and future.



CLEVER SOLUTIONS FOR ROOF INSTALLATIONS

ACCESSORIES USED FOR ACCESS AND PROTECTION OF THE GAPS AND PIPES THAT CONNECT THE OUTDOOR UNITS AND THE INDOOR UNITS



The mission of Niccons Italy is not only to give the customer excellent service, but to transform the relationship with external stakeholders into one of mutual trust and lasting collaboration.

NEW SUMO LC

- High resistance to adverse weather conditions and aging.
- Complete with stainless steel screws.
- Quick and easy assembly.



Niccons commitment to reducing its environmental footprint is evident in the recycled rubber used in the manufacture of the wide range of SUMO anti-vibration supports.

This has a positive impact on reducing the use of raw materials, which is essential in extending their life cycle. In addition, the eco-glue used in the production process encourages further recycling of the product in the future, promoting a circular and sustainable economy.

RAW MATERIAL PROCESSING



THE REVOLUTIONARY SUMO SOLAR



- PVC cage protection for your external unit.
- High performance and low weight.

Modular and adjustable PVC cages for external units which protect against vandalism, accidental damages and adverse weather conditions. 3 different versions are available: wall, ground for split outdoor units and VRF/VRV installations.

Our commitment to low environmental impact solutions is combined with our interest in renewable energy, all this through our SUMO SOLAR support panels.

These supports are equipped with a 65x50 mm cable duct and a slot for a steel cable (to increase the tightness of the supports).

Support is suitable for the installation of panels with a depth of 1050 mm; the panel can be placed on the support without any modifications needed. For the installation of panels with a depth of 1150 mm, remove the extra rubber part at the bottom of the support where marked.

niccons[®]
HVAC MANUFACTURING



PRODUCTION HAS BEEN THE SOUL OF OUR COMPANY FOR OVER 65 YEARS

We believe in people and for this reason we invest in them.

Since its conception in 1958, Rodigas has been able to read and interpret changes in society, anticipating the evolution of the market and offering solutions in tune with the changing times. Adaptability and innovation are key to the success of Rodigas, which today operates worldwide in air conditioning systems, photovoltaic systems and fall protection systems.

We believe that collaboration, respect and culture are fundamental values a company cannot dismiss. For this reason we are committed to investing, not only in the training of our employees, but also to the creation of a cohesive and reliable work environment. This guarantees safety and continuity in the workplace and subsequently translates into loyalty towards the company.



Rodigas has grown while observing the changes in society. This flexibility has marked our success over time.

Our bracket factory is the most renowned manufacturing complex in Europe, with over 1.5M pairs of brackets produced each year.

WE ARE

“

The factory cannot focus solely on profit margins. It must distribute wealth, culture, services, and democracy. I envision the factory for humanity, not humanity for the factory.

Rodigas adopts the words of Adriano Olivetti as their mantra, to summarise over sixty years of work. Grounded in these values, at present we have become the most acclaimed factory in Europe for the production of mounting equipment for HVAC, never forgetting the importance of the people who made it possible.

OUR CERTIFICATIONS

Certification of products and processes are the best quality assurances we can offer our customers. It is for this reason that we continuously subscribe to accredited institutions and professionals who guide us on our journey.



NEW SIZE BRACKETS FOR HEAT PUMPS EXTRA LOAD

THERE ARE PRODUCTS USED FOR SPECIFIC NEEDS OR MARKET NICHEs WHICH, OVER TIME AND ACCORDING TO CHANGING TRENDS, HAVE COME TO ENJOY A LEVEL OF USAGE AS WIDESPREAD AS IT IS OVERDUE.

Extra load brackets: each of our products is designed and certified according to international standards.

MINI FRAME

Rodigas new sliding brackets extra load for heat pumps are an innovative and versatile solution for the rapidly growing market of sustainable heating and cooling technologies.

Rodigas extra load brackets are designed to support this fast growing market, offering a reliable and aesthetically pleasing solution for the installation of heat pumps.

The construction quality and strength of the brackets ensures a long service life, thus guaranteeing safe support for the equipment. This is particularly focused on the easy installation and maintenance of heat pumps.

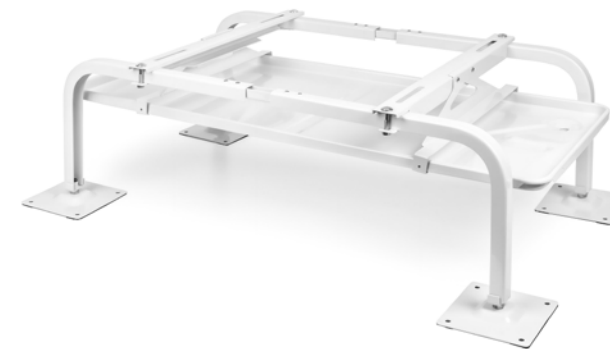
They are available in two colours, RAL 9002 and RAL 7035, offering a flexibility of choice to suit different architectural contexts and exterior designs.

The decision to introduce these new bracket supports was born from the growing demand for efficient and sustainable solutions for space heating and cooling.

Heat pumps are a pioneering technology in this sector, offering high energy efficiency and a smaller environmental footprint than traditional systems.

More product on www.rodigas.it

Rodigas[®]
SRL



By introducing the Rodigas new Mini Frame floor supports, specifically designed for heat pumps, we enter a world of innovation and functionality. These supports are available in two different heights, 400 and 500 mm, to suit the specific needs of your system.

The versatility of these supports is evident in the choice of colours, with finish options in RAL 9002 and RAL 7016. This allows the units to be perfectly integrated into their surroundings, guaranteeing a neat and aesthetic installation.

The minisplit system integrates perfectly with the installation site.

The design of the Mini Frame supports focuses on their suitability for installation on outdoor floors and terraces, thus meeting the needs of a constantly developing market.

Thanks to high-quality and resistant materials, and adjustable Nylon feet, these supports offer optimal durability and stability, ensuring safe and reliable installation of the heat pumps.

We designed these supports as a natural evolution of the more popular SP400 floor series, but we've adapted them specifically to the measurements of heat pumps or large machinery.

Our Mini Frames are made of galvanised steel, varnished with epoxy resins and tested to ensure high corrosion resistance. In order to guarantee such high standards, with over 480 hours of protection from salt spray, we perform the same tests as the automotive industry.

SINCE 1978 THE SPECIALISTS OF FIXING

AZZURRA is GIA's patented supporting bracket for the installation of wall hung bidets. It has been accurately designed to be easy to install, versatile and solid. Thanks to its compactness, it only takes 33.5mm of space and can be installed in 8cm thick room dividers, these brackets will not break the wall on both sides.

Similarly, the patented vertically adjustable fixing plate meets the installer's needs because it enables them to choose from multiple ways of applying drop elbows and sleeves, according to the kind of bidet that must be installed.

Moreover, the solid frame - made from an 11mm thick metal sheet, with two crosswise plates and strengthening ribs - makes AZZURRA able to support up to 400kg of weight, in compliance with UNI EN 14528 regulation.

WE HAVE MORE THAN 800 ITEMS

DESIGNED TO SATISFY THE MOST VARIED FIXING NEEDS OF PLUMBING, ELECTRICAL AND SUSTAINABLE FIELDS, BOTH IN DOMESTIC AND INDUSTRIAL ENVIRONMENTS. SO FAR GIA HAS PRODUCED MORE THAN 76 PATENTED MODELS, THAT HAVE BEEN WIDELY RECOGNISED, AND ARE NOW PART OF THE DAILY LIFE OF THE INSTALLER.

Since its creation in 1978, GIA has been working hard to provide installers with innovative solutions that are designed to improve quality and efficiency at work.

The Research and Development Department is constantly focused on following the Italian installer's mindset at the building site, in order to solve the problems he may encounter in his daily routine.

That's why GIA's effort is to design products that are able to meet the installer's needs and to fit every kind of installation, just like a tailored suit.

GIA offers a wide and complete range of fixing components for plumbing, electrical and building fields, either related to residential or industrial environment.

The quality of these products is guaranteed not only by the raw materials used to produce them, but also by the fact that many of them are certified or even patented.

Moreover, GIA considers the so called "Made in Italy" more than just a crucial feature of its products, but a real mission statement.

The whole process - from research and development through to production and after-sales service - takes place in Italy.

In order to guarantee the best quality standards, GIA carefully checks the qualitative, structural and technical features of its products at each stage of manufacturing, from the arrival of raw materials through to the packaging process.



We work alongside our customers and installers, seeking excellence within innovation. GIA is increasingly aware of the fact that helping our partners work better will save crucial time on the building site. Our proposals always come from listening to the installer's needs.

G-MAGIC THE RADIATOR FIXING

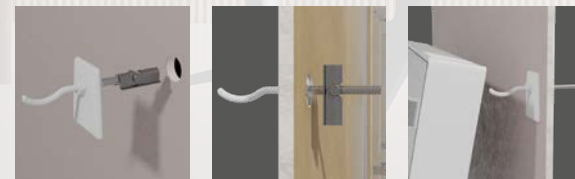
G-MAGIC the radiator fixing on plasterboard, even on a finished wall, without using anchors.

G-MAGIC, the radiator bracket for plasterboard walls, is one of the most prominent patents registered by GIA.

Unlike standard brackets used to install radiators, this one is designed to guarantee high load capacity while ensuring the best aesthetic result.

On one hand, the back is provided with a solid swivelling plate, which can be easily inserted in the drywall and accurately adjusted according to the wall's thickness. On the other hand, the front part of the bracket guarantees an elegant and good-looking finish thanks to its bevelled tip and the white nylon (reinforced with fiberglass) moulded cover.

Thanks to its patented system, G-MAGIC can be installed either on single or double-layered plasterboard walls, and it is particularly suitable for the installation of aluminium and steel tubular radiators (up to 4 columns).



G-MAGIC installed on the plasterboard wall.

gia
Fissaggi brevettati

FROM OUR RESEARCH AND DEVELOPMENT DEPARTMENT, A NEW SOLUTION DESIGNED FOR THE INSTALLER TO MEET ALL HIS NEEDS.

FLIP THE SOLUTION IN A CLICK

The patented pipe clamp closes effortlessly with a simple push.

The best solution for modern, quick and efficient installations.



FLIP SYSTEM is one of the masterpieces of GIA's production. It is a patented fixing system that is made up of fast-locking pipe clamps that are suitable for any kind of pipe lines.

When compared to traditional pipe clamps, the FLIP versions prove to significantly aid noise reduction in the drainage system, while allowing the drainage to flow. Additionally, the difference in these pipe clamps is the locking system which makes installation extremely quick and easy. FLIP pipe



SOCLIMA is one of the most recent additions in GIA's catalogue, specifically designed for thermal insulation. It is a professional fixing system for thermal insulation on walls, with exterior insulation finishing systems (EIFS), that are 80-160 mm thick. It is perfect for the installation of air conditioning units and other hanging

FLIP SYSTEM

It takes a CLICK to fasten a FLIP. It boasts UV resistance, shielding against harmful rays, and is impervious to saline corrosion. The robust brass thread insert ensures strength, while the sound-proof acoustic insulation adds to its appeal. This clamp is built to last, resisting the effects of both chemical and adverse weather conditions over time.

clamps are designed to be closed just by finger pressure, with no tools needed.

After installation, if necessary, the pipe clamp can even be opened again and removed, or further adjusted. To do so the installer may use the "Apriflip" extracting tool to easily open the pipe clamp. It takes only two moves: insert the pins in the two holes set at the sides of the upper part of the pipe clamp, then pull it out. Otherwise, using the same extracting technique, FLIP can be opened by using two cross head screwdrivers with a 3 mm diameter.

loads. The insulating cone, made of polyamide reinforced with fiberglass, is designed to make installation easier and substantially more solid and reliable. It is also provided with an internal barrier which stops heat conduction, while also preventing condensation/dripping within masonry.

STAY IN
TOUCH
WITH US

FOLLOW US ON OUR WEB CHANNELS
AND DISCOVER ALL OUR SOLUTIONS
TO SIMPLIFY YOUR WORK.



A UNION OF
EXCELLENCE



