

# SOLUTIONS FOR ROOFTOP SYSTEMS

---

Catalog  
2020

**Rodigas**<sup>®</sup>  
SRL

A FAMILY COMPANY  
SINCE 1958





1958



Since its creation in 1958, our company has been able to read and interpret changes in society, anticipating the evolution of the market and offering solutions in tune with the times.

Adaptability and innovation are the keys to the success of Rodigas, which today operates worldwide in the sectors of air conditioning systems, photovoltaic systems and fall protection systems.

“  
OUR COMPANY  
HAS GROWN LIKE  
A FAMILY.  
THIS STRATEGY  
HAS ALLOWED US  
TO BECOME A  
EUROPEAN COMPANY.  
”

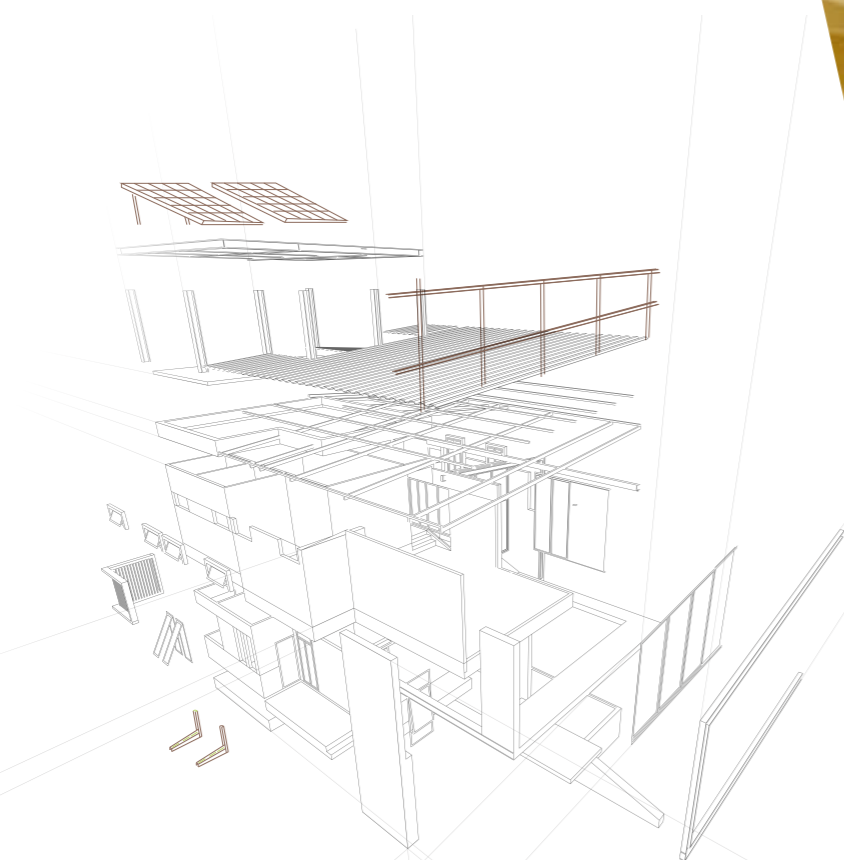
**Dino Roverato**  
Founder of Rodigas

# “ REALIZING A PROJECT IS A RESPONSIBILITY CHOICE ”

LAURA | RODIGAS TECHNICAL DEPARTMENT

“Our approach to the construction site or to a project does not consider only Frame Foot Systems but also the safety of people working on the roof.

Safety systems and structures for photovoltaic systems complete the offer for the designer and the installer .”



## OUR CERTIFICATIONS

Certified products and processes are the best quality assurance we can offer. It is for this reason that we continuously compare ourselves with accredited institutions and professionals who guide us on our journey.



Management System  
ISO 9001:2015  
www.tuv.com  
ID: 9105073334



Management System  
ISO 14001:2015  
www.tuv.com  
ID: 9105073334



Management System  
ISO 45001:2018  
www.tuv.com  
ID: 9105073334



Licenza 0082 del 15/12/2015



# FINITE ELEMENT ANALYSIS

## FRAME FOOT™ SUPPORT

### DEFINITION

Finite element analysis (FEA) is a computerized method for predicting how a product reacts to real-world forces, vibration, and other physical effects. Finite element analysis shows whether a product will break, wear out, or work the way it was designed. It is called analysis, but in the product development process, it is used to predict what is going to happen when the product is used.

### VERIFY METHOD

We have verified your structure with the Eurocodes and with different regional criteria to be sure to design in according to the necessity in a strict method. We have taken into consideration wind, snow, and earthquake.

### VERIFY STANDARDS

#### Seismic Load

European standard: Eurocode 8  
EN 1998-1:2005  
USA standard: ASCE 7-16

#### Wind load

European standard: Eurocode 1  
EN 1991-1-4:2005  
USA standard: ASCE 7-16

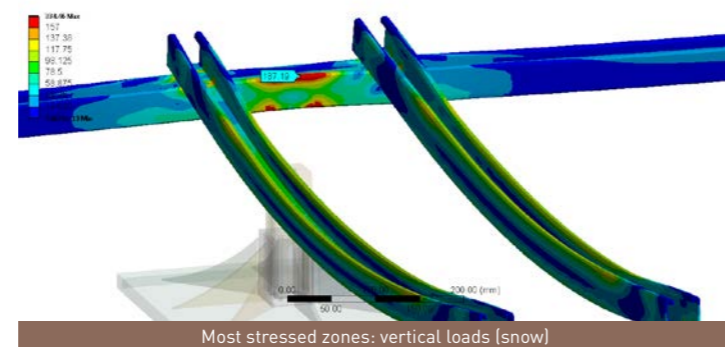
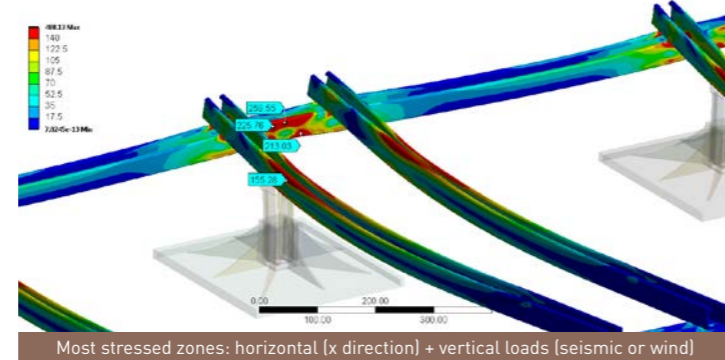
#### Snow load

European standard: Eurocode 1  
EN 1991-1-3:2005  
USA standard: ASCE 7-16

#### Additional standard

NTC 08 (for the Italian Market)

### AMPLIFIED DEFORMATION VIEW



### OUR PRODUCTS SPECIFICATION



**EARTHQUAKE VERIFY**  
E agR,max=3.64 m/s2\*  
ASCE 7-16 SS= 160% g\*



**WIND ACTION VERIFY**  
Eurocode agR,max=3.64 m/s2\*  
ASCE 7-16 SS=160% g\*



**METRES ABOVE SEA LEVEL**  
Eurocode fromm 600 to 800\*



**SNOW LOAD TESTED**  
eurocode alpine region, zone 4.5: max altitude 600 m\*  
eurocode alpine region, zone 3: max altitude 900 m\*  
ACSE 7-16 pg= 150 lbs/ft2\*

\* data refer to a standard installation in a building 10 meters high.

Please contact us for more info

### OUR CERTIFICATIONS



# TECHNICAL SUPPORT

## FRAME FOOT™ SUPPORT

### WE ARE TECHNICIANS

On this basis, our technical and sales staff composed by Engineers, Surveyors and Architects is continuously engaged in the realization of new projects and solutions of systems on roofs. The decades of experience in the photovoltaic and safety-systems sectors and the constant themes faced over the years on site are combined with the Company's long production history. This is what allows us to realize standard systems of wide application and to obtain products personalizations in line with the needs of the individual installation.

### SIAMO DEI TECNICI

Partendo da questo presupposto, il nostro personale tecnico commerciale composto da Ingegneri, Geometri ed Architetti è costantemente impegnato nella realizzazione di nuovi progetti e soluzioni di impianti su coperture. La pluridecennale esperienza nei settori del fotovoltaico e dell'anticaduta e le costanti tematiche affrontate negli anni in cantiere, vengono abbinate alla lunga storia produttiva dell'azienda. È questo che ci permette di realizzare sistemi standard di ampia applicazione e ottenere personalizzazioni dei prodotti in linea con le necessità della singola installazione.

### SURFACE LOAD TABLE - FOOT SURFACE 300x300 mm\*

Load per foot - kg/pc	10	20	30	40	50	60	70	80	90	100	110	120
Load per foot - kN/m <sup>2</sup> on the ground / flats roofs	1,90	2,18	3,27	4,36	5,45	6,54	7,63	8,72	9,81	10,90	11,99	13,08



Certified quality



Certified quality

# FT 200

## FRAME FOOT™ SUPPORT

### DESCRIPTION

Heavy-duty supporting system for use on flat or sloped (optional) surfaces.

### STEEL FRAME

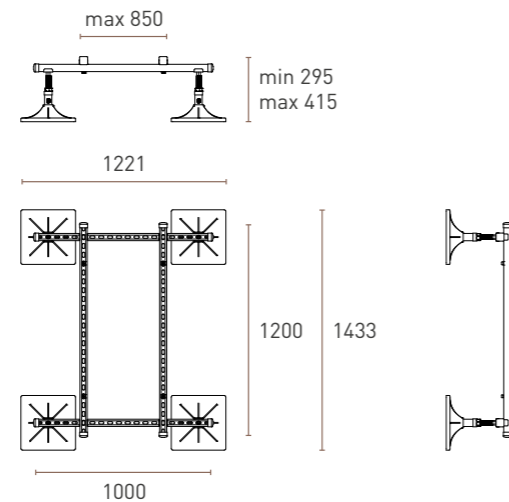
Manufactured from galvanised strut channels.  
All steel connections, screws and clamps are galvanised.  
Plastic end caps included.  
Height-adjustable from 295 mm up to 415 mm with M24 screw.  
Option from 745 mm to 865 mm.  
Easily adjustable, even after installation.  
Handy moveable bracket for 90° mounting channels.  
Special dimensions available on request.

### PLASTIC FOOT

High-impact composite material: composite plastics  
Equipped with anti-vibration mat  
UV-resistant  
Standard colour: black  
Working temperature: -40°C to +80°C  
Max. load per foot: 240 kg

### GENERAL DATA

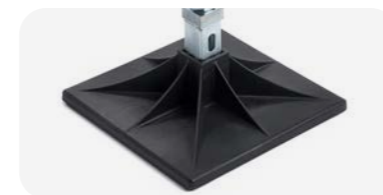
**Frame dimensions:** 1000x1200 mm  
**Foot dimensions:** 300x300 mm  
**Max load capacity\*:** 500 kg  
**Max spreaded load capacity\*:** 500 kg/m²



EASY REGULATION



QUICK ASSEMBLING



FEET + ANTIVIBRATION MATS



Certified quality

# FT 300

## FRAME FOOT™ SUPPORT

### DESCRIPTION

Heavy-duty supporting system for use on flat or sloped (optional) surfaces.  
Height-adjustable from 295 mm to 415 mm (even after installation).

### STEEL FRAME

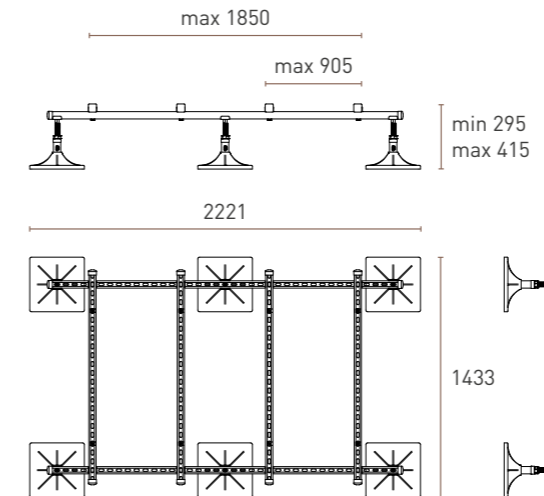
Manufactured from galvanised strut channels.  
All steel connections, screws and clamps are galvanised.  
Plastic end caps included.  
Height-adjustable from 295 mm up to 415 mm with M24 screw.  
Option from 745 mm to 865 mm.  
Easily adjustable, even after installation.  
Handy moveable bracket for 90° mounting channels.  
Special dimensions available on request.

### PLASTIC FOOT

High-impact composite material: composite plastics  
Equipped with anti-vibration mat  
UV-resistant  
Standard colour: black  
Working temperature: -40°C to +80°C  
Max. load per foot: 240 kg

### GENERAL DATA

**Frame dimensions:** 2221x1433 mm  
**Foot dimensions:** 300x300 mm  
**Max load capacity\*:** 1040 kg  
**Max spreaded load capacity\*:** 500 kg/m²



### SURFACE LOAD TABLE - FOOT SURFACE 300x300 mm\*

Load per foot - kg/pc	10	20	30	40	50	60	70	80	90	100	110	120
Load per foot - kN/m² on the ground / flats roofs	1,90	2,18	3,27	4,36	5,45	6,54	7,63	8,72	9,81	10,90	11,99	13,08



Certified quality

# FT 400

## FRAME FOOT™ SUPPORT

### DESCRIPTION

Heavy-duty supporting system for use on flat or sloped (optional) surfaces.

### STEEL FRAME

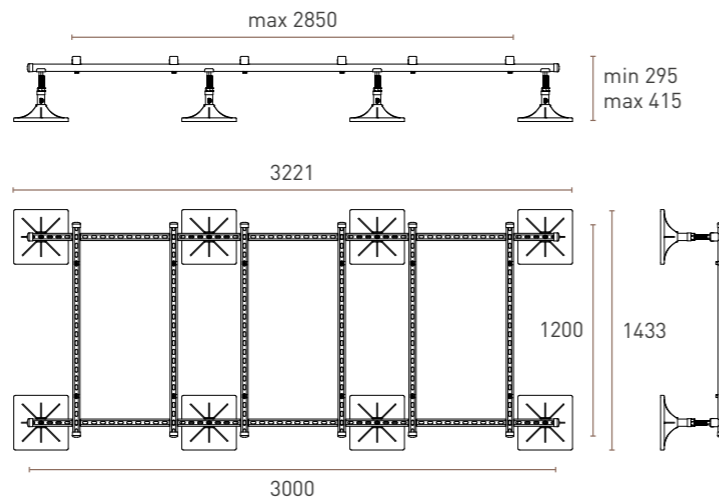
Manufactured from galvanised strut channels.  
All steel connections, screws and clamps are galvanised.  
Plastic end caps included.  
Height-adjustable from 295 mm up to 415 mm with M24 screw.  
Option from 745 mm to 865 mm.  
Easily adjustable, even after installation.  
Handy moveable bracket for 90° mounting channels.  
Special dimensions available on request.

### PLASTIC FOOT

High-impact composite material: composite plastics  
Equipped with anti-vibration mat  
UV-resistant  
Standard colour: black  
Working temperature: -40°C to +80°C  
Max. load per foot: 240 kg

### GENERAL DATA

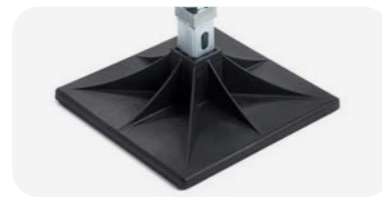
**Frame dimensions:** 3000x1200 mm  
**Foot dimensions:** 300x300 mm  
**Max load capacity\*:** 1620 kg  
**Max spreaded load capacity\*:** 500 kg/m<sup>2</sup>



EASY REGULATION



QUICK ASSEMBLING



FEET + ANTIVIBRATION MATS



Certified quality

# FT 500 EXTENSION MODULE

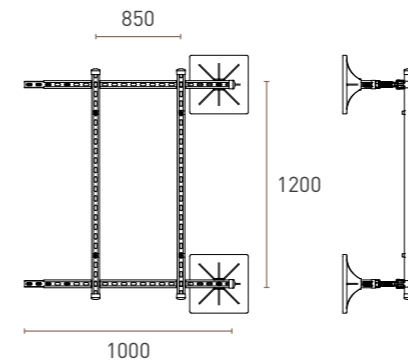


### DESCRIPTION

Extension module for FT 200, FT 300, FT 400.  
Height-adjustable from 295 mm to 415 mm.  
Channels connector included.

### GENERAL DATA

**Frame dimensions:** 1111x1433 mm  
**Foot dimensions:** 300x300 mm  
**Max load capacity\*:** 500 kg  
**Max spreaded load capacity\*:** 500 kg/m<sup>2</sup>



\* The maximum load / spread load capacity is expressed without taking into account any safety parameter or factor. It is the customer's responsibility to choose and use appropriate tools and fixing materials which ensure that the final installation is in compliance with all national, state, local and environmental regulations. Check the safety parameters that are appropriate for your intended use and contact us if necessary.



Certified quality

# FT 100 AIR DUCTS SUPPORT

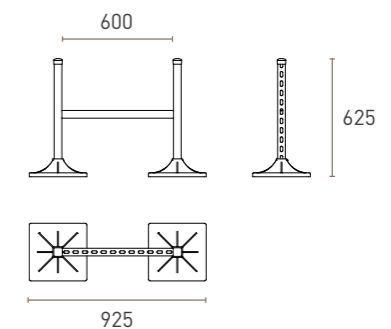


### DESCRIPTION

H-frame to support air ducts.  
Easily adjustable, even after installation.  
Galvanized steel elements based on common struts channels.  
Other dimensions available on request.

### GENERAL DATA

**Dimensions:** 952x625x310 mm  
**Height-adjustable:** from 240 mm to 600 mm  
**Foot dimensions:** 300x300 mm  
**Max load capacity\*:** 480 kg  
**Max spreaded load capacity\*:** 500 kg/m<sup>2</sup>



Certified quality

# RUBBER FIX

## DESCRIPTION

Rubber black floor supports guarantee a practical versatile and environmentally friendly solution. Supports are made of black SBR recycled rubber that warranty an high decrement of vibrations and durability. External unit, or other utilities, can be fixed through aluminum channel recessed into support. Support has also practical hole to fix it to ground. It's supplied with fixing components.

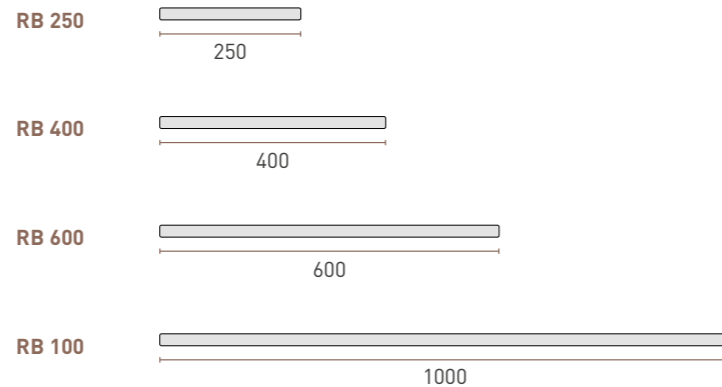
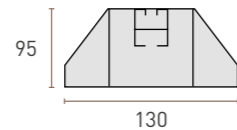
I supporti a pavimento in gomma nera garantiscono una soluzione pratica, versatile ed attenta all'ambiente. I supporti sono infatti realizzati con gomma riciclata SBR che garantisce un'elevata riduzione delle vibrazioni e durata nel tempo. Il fissaggio della motocondensante (o eventuali altre utenze) è garantito dal profilo di alluminio annegato nel supporto stesso. Il supporto è inoltre provvisto di predisposizione per il fissaggio a terra e viene fornito completo di viti.

## GENERAL DATA

**Foot material:** SBR recycled rubber  
**Profile material:** aluminium  
**Profile dimension:** 21x22 mm  
**Fixing screw:** M10x30mm  
**Colour:** black



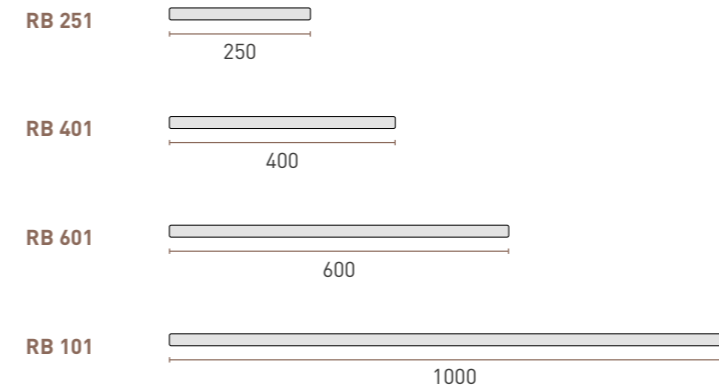
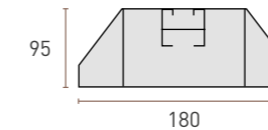
## DIMENSIONS AND LOADING CAPACITY



Code	Dimensions	Lenght	Load capacity
RB 250	130x95 mm	250 mm	120 kg
RB 400	130x95 mm	400 mm	180 kg
RB 600	130x95 mm	600 mm	300 kg
RB 100	130x95 mm	1000 mm	350 kg



## DIMENSIONS AND LOADING CAPACITY



Code	Dimensions	Lenght	Load capacity
RB 251	180x95 mm	250 mm	120 kg
RB 401	180x95 mm	400 mm	180 kg
RB 601	180x95 mm	600 mm	300 kg
RB 101	180x95 mm	1000 mm	350 kg

# RUBBER FIX

## DESCRIPTION

Rubber black floor supports guarantee a practical versatile and environmentally friendly solution. Supports are made of black SBR recycled rubber that warranty an high decrement of vibrations and durability. External unit, or other utilities, can be fixed through aluminum channel recessed into support. Support has also practical hole to fix it to ground. It's supplied with fixing components.

I supporti a pavimento in gomma nera garantiscono una soluzione pratica, versatile ed attenta all'ambiente. I supporti sono infatti realizzati con gomma riciclata SBR che garantisce un'elevata riduzione delle vibrazioni e durata nel tempo. Il fissaggio della motocondensante (o eventuali altre utenze) è garantito dal profilo di alluminio annegato nel supporto stesso. Il supporto è inoltre provvisto di predisposizione per il fissaggio a terra e viene fornito completo di viti.

## GENERAL DATA

**Foot material:** SBR recycled rubber  
**Profile material:** aluminium  
**Profile dimension:** 40x35 mm  
**Fixing screw:** M10x30mm  
**Colour:** black



Fixing details



# RUBBER FIX

## DESCRIPTION

Rubber black floor supports guarantee a practical versatile and environmentally friendly solution. Supports are made of black SBR recycled rubber that warranty an high decrement of vibrations and durability. External unit, or other utilities, can be fixed through aluminum channel recessed into support. Support has also practical hole to fix it to ground. It's supplied with fixing components.

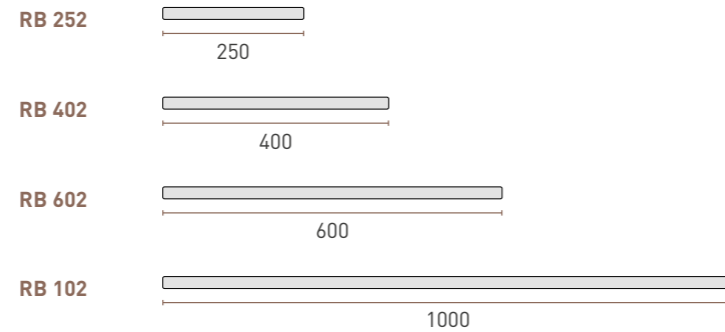
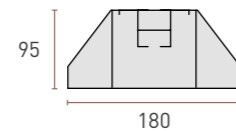
I supporti a pavimento in gomma nera garantiscono una soluzione pratica, versatile ed attenta all'ambiente. I supporti sono infatti realizzati con gomma riciclata SBR che garantisce un'elevata riduzione delle vibrazioni e durata nel tempo. Il fissaggio della motocondensante (o eventuali altre utenze) è garantito dal profilo di alluminio annegato nel supporto stesso. Il supporto è inoltre provvisto di predisposizione per il fissaggio a terra e viene fornito completo di viti.

## GENERAL DATA

**Foot material:** SBR recycled rubber  
**Profile material:** aluminium  
**Profile dimension:** 42x22 mm  
**Fixing screw:** M10x30mm  
**Colour:** black



## DIMENSIONS AND LOADING CAPACITY



Code	Dimensions	Lenght	Load capacity
RB 252	180x95 mm	250 mm	120 kg
RB 402	180x95 mm	400 mm	180 kg
RB 602	180x95 mm	600 mm	300 kg
RB 102	180x95 mm	1000 mm	350 kg

# RUBBER RISER



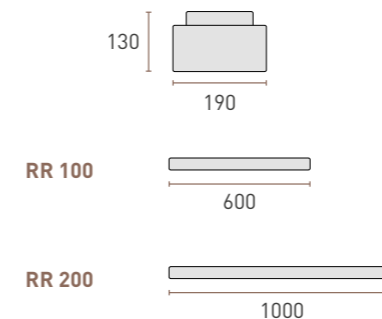
## DESCRIPTION

The extension riser is made in the same material as the Rubber fix. This component simplifies the installation, when is necessary to elevate the standard systems.

## GENERAL DATA

**Riser material:** SBR recycled rubber  
**Colour:** black

## DIMENSIONS



Rodigas Srl reserves the right to make changes to the products described in the catalogue at any time without notice. All data presented herein are indicative and not binding.

# HEXAHEDRAL RUBBER BLOCKS



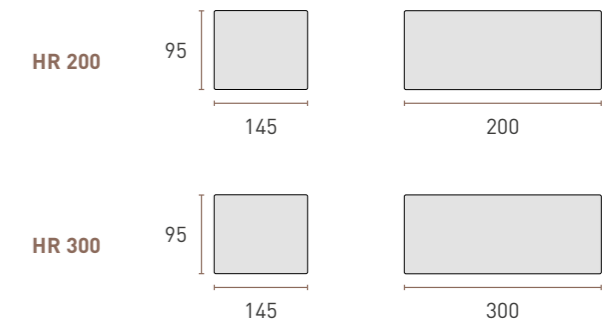
## DESCRIPTION

Hexahedral rubber blocks is a perfect solution to fix pipes, canalization, and others stuff to preserve the roof covers. Available in two different size.

## GENERAL DATA

**Riser material:** SBR recycled rubber  
**Colour:** black

## DIMENSIONS



# ALUMINIUM ROOF INLET

## DESCRIPTION

To cover the hole on the roof made to pass through linesets, that are connected to an outdoor unit.

High thermal stability.

Good chemical resistance.

Excellent resistance to weathering and ageing.

Assembly by stainless steel screw (supplied).



Questi accessori, si utilizzano per proteggere dalle intemperie i fori realizzati sulle coperture per passare con le tubazioni in rame che sono collegano l'unità esterne a quelle interne.

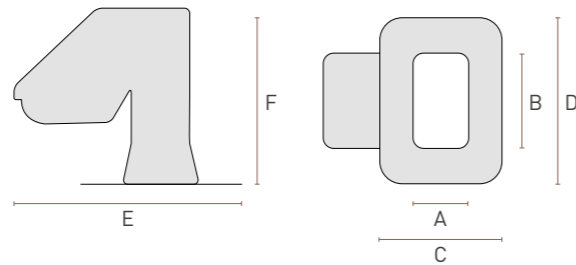
Elevata stabilità termica.

Eccellente resistenza agli agenti atmosferici e all'invecchiamento.

Montaggio mediante vite in acciaio inossidabile (in dotazione).

Sistema di anti taglio delle tubazioni in plastica.

## DIMENSIONS AND LOADING CAPACITY



MODEL	UT100	UT200	UT400
Material	Aluminium	Aluminium	Aluminium
Inside dimensions: AxB	80x80 mm	125x125 mm	125x250 mm
Outside dimensions: CxD	260x260 mm	360x360 mm	360x490 mm
Outside dimensions: ExF	290x240 mm	520x465 mm	520x465 mm
MOQ Packing	1 pc	1 pc	1 pc
Pallet	30 pcs	30 pcs	30 pcs

## GENERAL DATA

**Material:** Aluminium

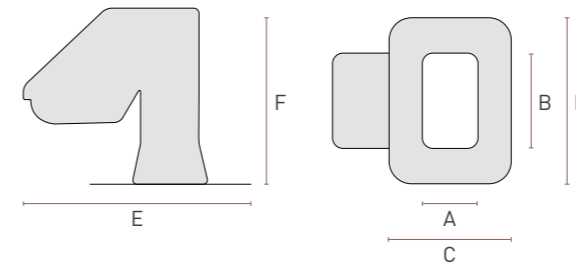
**Colour:** RAL 9002

**Pack:** carton box

**Pieces:** 1 piece



## DIMENSIONS AND LOADING CAPACITY



MODEL	UT300	UT500
Material	Pvc	Pvc
Inside dimensions: AxB	125x125 mm	125x250 mm
Outside dimensions: CxD	360x360 mm	360x490 mm
Outside dimensions: ExF	522x420 mm	522x420 mm
MOQ Packing	1 pc	1 pc
Pallet	30 pcs	32 pcs

# PLASTIC ROOF INLET

## DESCRIPTION

To cover the hole on the roof made to pass through linesets, that are connected to an outdoor unit.

High thermal stability.

Good chemical resistance.

Excellent resistance to weathering and ageing.

Assembly by stainless steel screw (supplied).

Questi accessori, si utilizzano per proteggere dalle intemperie i fori realizzati sulle coperture per passare con le tubazioni in rame che sono collegano l'unità esterne a quelle interne.

Elevata stabilità termica.

Eccellente resistenza agli agenti atmosferici e all'invecchiamento.

Montaggio mediante vite in acciaio inossidabile (in dotazione).

Sistema di anti taglio delle tubazioni in plastica.

## GENERAL DATA

**Material:** UV-stabilized plastic

**Colour:** RAL 9002

**Pack:** carton box

**Pieces:** 1 piece



Fixing details

Printed: 06/2020

RODIGAS.IT

---

Via Giacomelli, 10  
35010 Limena  
Padova (Italy)

T +39 049 884 00 56  
F +39 049 884 00 60  
info@rodigas.it

**Rodigas**<sup>®</sup>  
SRL 

A FAMILY COMPANY  
SINCE 1958